

BRANDED SPORTS KIT SIZING GUIDE

If you're unsure which size to buy, try measuring a garment that you already own that fits you well, and compare those measurements to the size chart. Lay the garment on a flat surface and use the guides below to measure.

Note: All measurements are approximate.

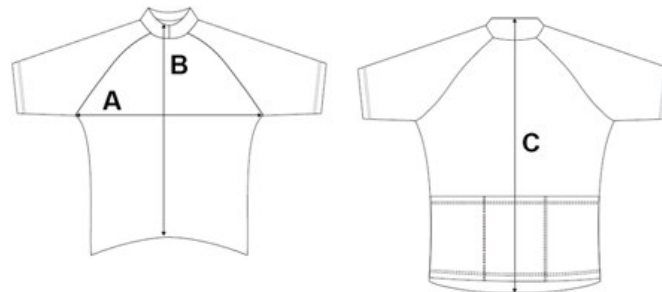
CYCLING SHORTS

MENS	A (Waist)	B (Hip)	C (Inseam)
XS	10.5"	13.5"	9.25"
S	11.5"	14.5"	9.5"
M	12.5"	15.5"	9.75"
L	13.5"	16.5"	10"
XL	14.5"	17.5"	10.25"

WOMENS	A (Waist)	B (Hip)	C (Inseam)
XS	9.5"	12.5"	9"
S	10.5"	13.5"	9.25"
M	11.5"	14.5"	9.5"
L	12.5"	15.5"	9.75"
XL	13.5"	16.5"	10"



CYCLING TOP



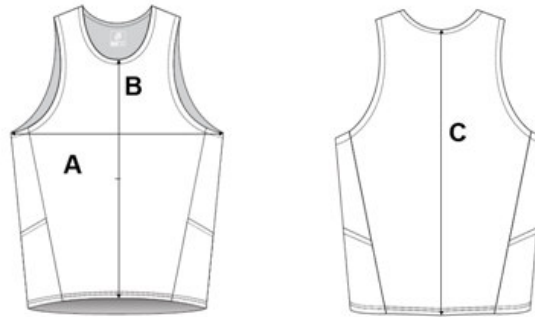
MENS	A	B	C	WOMENS	A	B	C
XS	18"	22"	27"	XS	17"	20"	25"
S	19"	23"	28"	S	18"	21"	26"
M	20"	24"	29"	M	19"	21"	27"
L	21"	25"	30"	L	20"	22"	27"
XL	22"	25.5"	31"	XL	21"	23"	28"

RUNNING VEST & TECHNICAL TSHIRT

Based on your chest and waist measurements

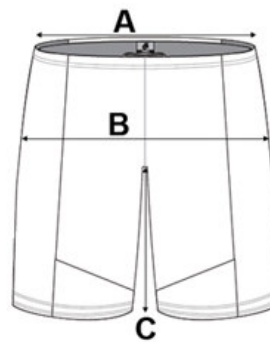
MENS	Chest	Waist	WOMENS	Chest	Waist
XS	32"	29"	XS	29"	23"
S	35"	31"	S	32"	25"
M	39"	35"	M	34"	27"
L	43"	37"	L	37"	30"
XL	46"	40"	XL	39"	32"
2X	49"	42"	2X	42"	35"

MULTI SPORT TOP



MENS	A	B	C	WOMENS	A	B	C
XS	15"	17.5"	21"	XS	14"	17"	21"
S	16"	18"	21"	S	15"	17.5"	21"
M	17"	18"	22"	M	16"	18"	21"
L	18"	18"	32"	L	17"	18"	22"
XL	19"	18.5"	22.5"	XL	18"	18"	22"

MULTI SPORT SHORTS



MENS	A	B	C	WOMENS	A	B	C
XS	11.5"	14.5"	5.25"	XS	11.5"	14"	5"
S	12.25"	15"	5.5"	S	11.75"	14.5"	5.25"
M	12.75"	15.5"	5.75"	M	12.25"	15"	5.5"
L	13.25"	16"	6"	L	12.75"	15.5"	5.75"
XL	13.75"	16.5"	6.25"	XL	13.25"	16"	6"